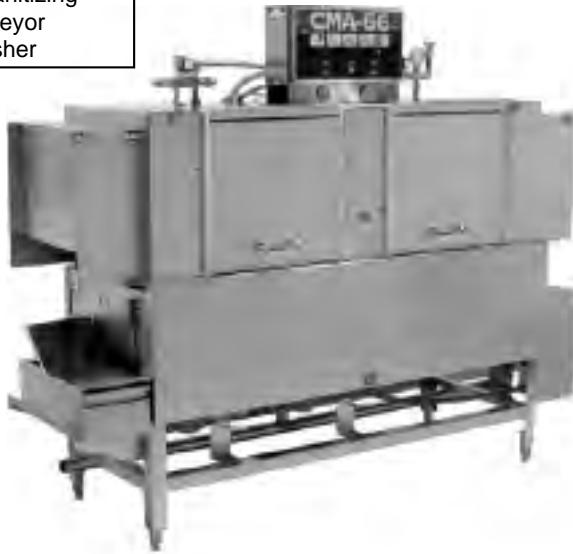




ALPINE SANITATION & SUPPLIES LTD.  
 24 Ronson Drive, Unit 16, Etobicoke, Ontario M9W 1B4  
 Bus: (416)-744-2120 Fax: (416)-249-1859 Toll Free: 1-800 465-6198

## CMA-66L

Chemical Sanitizing  
 66" Conveyor  
 Dishwasher

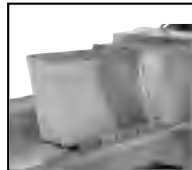


### FEATURES:

- 242 racks / 968 covers per hour.
- Economical to operate. Uses only .8 gallons of water per cycle.
- Four-stage washing process provides pre-wash, dual power wash and final rinse all in a 66" machine.
- Unique soil purging system filters wash water and traps plate debris into an external tray. Tray can be easily removed for dumping contents.
- Heavy duty 12 and 14 gauge 304 stainless steel construction offers durable performance and years of trouble free operation.
- Built-in chemical resistant industrial 10kW heater is proven to be more durable than commercial style heaters.
- Large 19" high opening accommodates larger items and utensils.
- Auto start/stop makes operation safe and easy.
- Includes table limit switch and rack saver arm that protect the machine, dishracks and table from damage.
- Three speed settings available for optimum cleaning performance.



Four-stage washing process provides pre-wash, power wash and final rinse all in a 66" machine.



Large 19" high opening accommodates larger items and utensils.



Easy to remove wash arms with captive end caps. **Never lose another end cap again!**



Top mounted controls include easy to read temperature gauges and complete operating instructions.

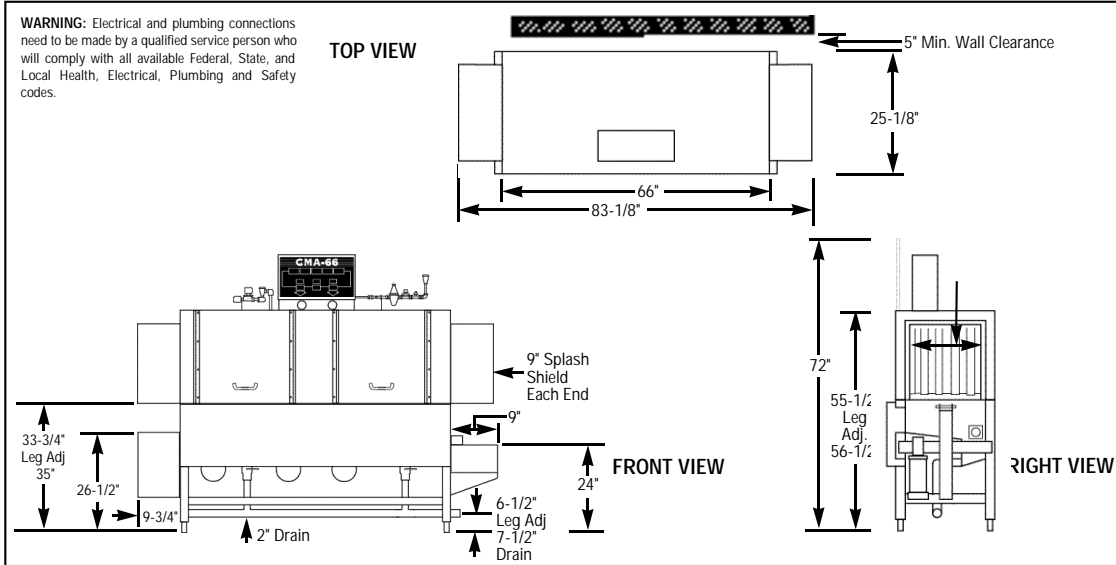


Top mounted controls include easy to read temperature gauges and complete operating instructions.

#AIA

# CMA-66L

## Chemical Sanitizing 66" Conveyor Dishwasher



Spec. #

**Specifications:**

MODEL CMA-66L	USA	METRIC		USA	METRIC	
OPERATING CAPACITY			<b>DIMENSIONS</b>			
RACKS PER HOUR (NSF RATED)	242	242		DEPTH	25-1/8"	(64cm)
CONVEYOR SPEED	6.75 FT./MIN.	(206 CM/MIN.)	WIDTH	66"	(167.64cm)	
DRAIN	2"	-	HEIGHT	69-1/2" (73" door open)	(176.5cm)	
(3) WASH PUMP MOTORS HP	1	1	STANDARD TABLE HEIGHT	34"	(86cm)	
CONVEYOR MOTOR HP	1/3	1/3	MAX HEIGHT CLEARANCE FOR DISHES	19"	(48cm)	
WATER INLET - FILL	3/4"	-	<b>STANDARD DISHRACK</b>			
WATER INLET - FINAL RINSE	1/2"	-	DIMENSIONS	19-3/4"X19-3/4"	(50X50cm)	
WASH TANK CAPACITY			<b>ELECTRICAL RATING</b>	<b>VOLTS</b>	<b>PHASE</b>	<b>AMPS</b>
PRE-WASH	5.25 GAL	(20.0 L)		208	1	65
WASH	13.25 GAL	(50.0 L)		240	1	68
TOTAL	18.5 GAL	(70 L)		208	3	42
WASHPUMP CAPACITY			240	3	45	
EACH	38 GPM	(143.8 LPM)	<b>ELECTRIC TANK HEATER</b>	10kW		
OPERATING TEMPERATURE			<b>SPECIFY DIRECTION OF RACK TRAVEL (RIGHT TO LEFT OR LEFT TO RIGHT) WHEN ORDERING</b>			
WASH	140°F-150°F	(60°C/65.5°C)	<b>SHIPPING WEIGHT</b>			
FINAL RINSE	140°F-150°F	(60°C/65.5°C)		APPROXIMATE	750#	(340.2kg)
WATER CONSUMPTION						
PER RACK (FINAL RINSE)	.8 GAL	(3 L)				
PER HOUR (FINAL RINSE)	192 GPH	(726.8 LPH)				

**Summary Specifications: Model CMA-66L**

The Model CMA-66L low energy, chemical sanitizing conveyor dishwasher meets NSF, UL, and CUL sanitation and construction standards WITHOUT the use of a BOOSTER HEATER. The CMA-66L performs three separate washing functions including a built-in pre-wash, all in a 66" space. The CMA-66L washes up to 242 racks per hour and uses a minimum .8 gallons of water per rack while achieving sparkling, clean, dry dishes.

**Available Models**

- CMA-66LR/L Right to Left
- CMA-66LL/R Left to Right

**Available Options**

- Corner Feed Table
- Alternative electrical options
- Also available at 205 or 167 racks/hr
- Stainless steel dishtables
- Auto Fill
- Vent Hood with 4" X 16" Vent and Damper Control (2 per set)
- Motor Cover

AIA #